

Anti-GCDFP-15 Antibody
Mouse Monoclonal Antibody
Catalog # AH13434**Specification**

Anti-GCDFP-15 Antibody - Product Information

Application	WB, IHC-P, IF, FC
Primary Accession	P12273
Other Accession	99949
Reactivity	Human
Host	Mouse
Clonality	Monoclonal
Isotype	Mouse / IgG2a, kappa
Calculated MW	16572

Anti-GCDFP-15 Antibody - Additional Information**Gene ID** 5304**Other Names**

BRST-2; GCDP-15; gp17; GPI4; Gross cystic disease fluid protein 15; Prolactin-induced protein (PIP); Prolactin-inducible protein (PIP); Secretory actin-binding protein (SABP)

Application Note

WB~~1:1000<br \>IHC-P~~N/A<br \>IF~~1:50~200<br \>FC~~1:10~50

Format

200ug/ml of Ab purified from Bioreactor Concentrate by Protein A/G. Prepared in 10mM PBS with 0.05% BSA & 0.05% azide. Also available WITHOUT BSA & azide at 1.0mg/ml.

Storage

Store at 2 to 8°C. Antibody is stable for 24 months.

Precautions

Anti-GCDFP-15 Antibody is for research use only and not for use in diagnostic or therapeutic procedures.

Anti-GCDFP-15 Antibody - Protein Information**Name** PIP**Synonyms** GCDP15, GPI4**Cellular Location**

Secreted.

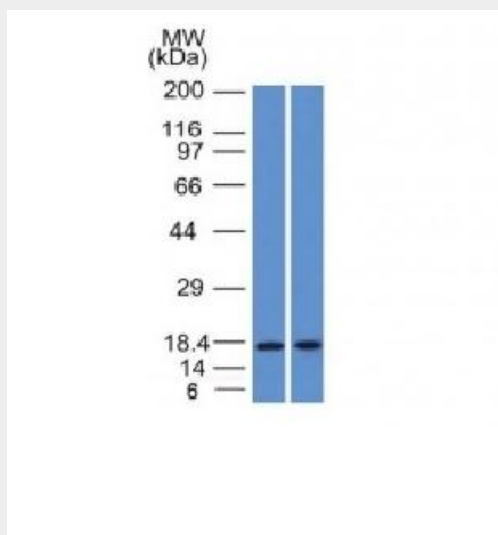
Tissue Location

Expressed in pathological conditions of the mammary gland and in several exocrine tissues, such as the lacrimal, salivary, and sweat glands

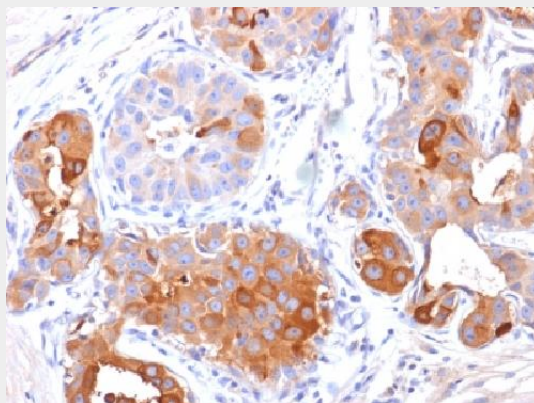
Anti-GCDFP-15 Antibody - Protocols

Provided below are standard protocols that you may find useful for product applications.

- [Western Blot](#)
- [Blocking Peptides](#)
- [Dot Blot](#)
- [Immunohistochemistry](#)
- [Immunofluorescence](#)
- [Immunoprecipitation](#)
- [Flow Cytometry](#)
- [Cell Culture](#)

Anti-GCDFP-15 Antibody - Images

Western Blot Analysis (A) Human Pancreas (B) HepG2 Cell lysate Using GCDFP-15 Monoclonal Antibody (PIP/1571).



Formalin-fixed, paraffin-embedded human Breast Carcinoma stained with GCDFP-15 Monoclonal Antibody (PIP/1571).

Anti-GCDFP-15 Antibody - Background

It recognizes a protein of 15kDa, identified as Gross cystic disease fluid protein 15 (GCDFP-15). It is a major protein component of benign breast gross cysts. It is a known marker of breast cancer, as it is found in approximately 50% of all breast cancer specimens. GCDFP-15, also known as PIP, for prolactin inducible protein, is a prolactin and androgen controlled protein. This antibody is useful in the identification of metastatic breast carcinoma, or fluid analysis.